



2016

VIPR 
Virtual Incident Procurement



**Proposed
changes to
the 2017
Templates in
VIPR**

Solicitation Template Review Topics:

1. National Solicitation Plan
2. Review of 2017 Template Changes
 - Faller (Single and Module)
 - Heavy Equipment
 - Mechanic with Service Truck
 - Fuel Tender
 - Vehicle with Driver
3. Website Information



National Solicitation Plan for I-BPAs

National and Regional

<http://www.fs.fed.us/business/incident/compsolplan.php>

National Solicitation Plan for I-BPAs - updated 11-4-2015												
Equipment Category	Solicitation Year for Incident Blanket Purchase Agreements											
	FY 2012	FY 2013	FY 2014	FY 2015	FY 2016	FY 2017	FY 2018	FY 2019	FY 2020	FY 2021	FY 2022	FY 2023
National												
Bus, Crew Carrier			R					RR				
Clerical Support Unit			RR					RR				
Communications Trailer			R					RR				
GIS Unit			RR					RR				
Helicopter Operations Support Trailer			R					RR				
Refrigerated Trailer (Regional in 2013)												
Regional												
Heavy Equipment with Water:		RR			RR			RR			RR	
Pumper Cat												
Skidgine												
Softtrack												
Refrigerated Trailer (Regional in 2013)		RR			RR			RR			RR	
Water Handling Equipment:		RR			RR			RR			RR	
Engine												
Water Tender (Support)												
Water Tender (Tactical)												
Weed Washing Unit		R			RR			RR			RR	
Clerical Support Unit (National in 2014)												
Faller Module (Single and Module)			RR			RR			RR			RR
Heavy Equipment:			R			RR			RR			RR
Dozer												
Tractor Plow												
Excavator												
Transport												
Mechanic with Service Truck			RR			RR			RR			RR
Tent and Canopy			RR			RR			RR			RR
Gray Water Truck	R			RR			RR			RR		
Handwashing Station, Trailer Mounted												
Potable Water Truck												
Mobile Laundry	R			RR			RR			RR		
Toilet, Portable	R			RR			RR			RR		
Toilet, Portable, Wheelchair												
Handwashing Station, Portable												
Total Items/year	6	8	12	6	8	7	6	13	7	6	8	7
Regional Solicitations/year	3	4	4	3	4	4	3	4	4	3	4	4
National Solicitations/year	0	0	5	0	0	0	0	5	0	0	5	0

2017
Template
Overview

National Solicitation Plan for I-BPAs

Local

<http://www.fs.fed.us/business/incident/compsolplan.php>

Local (see Exhibit B)												
Fuel Tender			R			RR			RR			RR
Helicopter Operations Support Trailer												
Vehicle with Driver (includes Passenger Vehicles and Trucks)			R			RR			RR			RR
Chipper	X			R			RR			RR		
Miscellaneous Heavy Equipment:	X			R			RR			RR		
Feller Buncher												
Mulcher/Masticator (Boom Mounted)												
Strip Mulcher/Masticator												
Road Grader												
Skidder												
Color Legend:	2013	2014	2015				R - Resolicitation			RR - on-going solicitation cycle		
Computers - The Agency will use commercial procedures, or establish a Regional or Local BPA.												
Local I-BPAs are optional & solicited at the discretion of each region; therefore, not counted or recognized as a part of the national workload.												
Trailers (Clerical Support Unit, Communications Trailer, GIS Unit, and Helicopter Operations Support Trailer) - all trailers were moved from Local and Regional to a National solicitation in 2014, and now done by ISB.												
Generic Template is also supported in VIPR as a Local solicitation template. The Generic template can be used to acquire other resources as identified on the Equipment and Method of Hire National Standards Chart, Exhibit 23 in the Interagency Incident Business Management Handbook.												

2017
Template
Overview

Template Overview

Templates Being Re-solicited in 2017

1. Faller
 - Single and Module
2. Heavy Equipment
 - Dozer, Excavator
3. Mechanic with Service Truck
4. Fuel Tender
5. Vehicle with Driver

Template Review

Scope of Templates Under Review:

- ✓ The Faller, Heavy Equipment, Mechanic with Service Truck, and Tent/Canopy are all Regional templates
- ✓ The Vehicle with Driver is a Local template
- ✓ The Fuel Tender is being proposed to be done as a National template



Faller

Faller Changes:

- D.3.1, the following *clarifications* are being proposed:
 - (a) Each person under this Agreement shall meet the following minimum requirements:
 - (1) 3 years experience in the commercial logging industry as a timber faller and/or 3 years experience as a faller on wildfire incidents (1,000 hours of timber falling is equal to 1 year of experience). *At a minimum, 1000 hours of commercial timber falling experience per year for the last three years. This experience may be augmented by falling timber on wildland fire incidents as a NWCG certified Class C or Faller 1 and commercial thinning projects. Proof of experience must be submitted to the government for approval of proposed personnel before awards will be made. Fallers shall maintain currency the entire term of the agreement.*

Faller Changes-continued:



- D.2.2.4, the following clause is added:
Biobased Products. This procurement requires the use of biobased products to the extent that such products are reasonably available, meet agency or relevant industry performance standards, and are reasonably priced. Where available, these products should first be acquired from among qualified products that fall under the umbrella of items designated through the Federal Biobased Products Preferred Procurement Program (FB4P). Information is available at:

<http://www.biopREFERRED.gov/>



Heavy Equipment

Heavy Equipment Changes:

- D.2.1.2, clarifications on the operator protection, now consistent with what is in the Heavy Equipment with Water solicitation, applicable to the Dozer and Tractor Plow:
 - (c) All equipment under this solicitation must have a factory installed cab or aftermarket cab system that meets or exceeds the original factory cab for operator protection. The protective canopy shall meet all applicable Federal and State (the State where equipment is registered) safety standards (per OSHA, 29 CFR 1910.266) and must have operator protection, to protect the operator from injury due to falling trees, ...



Heavy Equipment Changes - continued:

- D.2.1.2, clarifications on lighting and underbody protection, now consistent with what is in the Heavy Equipment with Water solicitation, applicable to the Dozer and Tractor Plow:

(d) Lighting (Minimum 2 rear, 2 forward). Factory equipped lighting must be operational. All attachments to the parent machine must be illuminated for night operations. Lights must be mounted to the equipment in such a way to provide protection from damage and provide illumination beyond the blade or working area.

(e) Underbody protection (belly pan, rock guards unless not recommended by manufacturer).

Heavy Equipment Changes - continued:

- The following is added “DOZERS –
(a) In addition to D.2.1.2, dozers shall have:
(1) Operator Protection shall meet all applicable Federal and State (the State where equipment is registered) logging safety standards (per OSHA, 29 CFR 1910.266) and must have operator protection, such as a Forestry cab package with wire mesh or safety glazing that provides equivalent protection. The rear portion of the cab shall be fully enclosed with open mesh material or heavy Polycarbonate material capable of withstanding a broken winch line or jillpoke, with openings of such size as to reject the entrance of an object larger than 2 inches in diameter. The covering if installed, shall be affixed to the structural members
...”

Heavy Equipment Changes - continued:

- D.6.2, Add the Transport Minimum Daily Guarantee to the CBA calculation for the Dozer, Tractor Plow, and Excavator:
 - The total points for each piece of equipment's advantages are divided by the price (*total of both equipment and transport*) resulting in a dispatch priority list with highest total advantage per dollar being ranked highest on the dispatch list.

Heavy Equipment Changes - continued:

- Exhibit A, adds a definition for the Dozer. This change will be seen in ALL solicitation templates since the Exhibit A is standard for ALL:
- DOZER – a steel tracked machine equipped with a horizontal blade. Weight of the machine and engine horsepower generate tractive ability. This machine is purpose built to push material in road construction, etc. Tracked loaders, rubber tracked machines, machines equipped with a track that can conform to uneven surfaces (Softtracks) trail machines (Sweco-Sutter, etc.) with large horsepower to weight ratios and other vehicles that were not expressly constructed as a bulldozer are not accepted within this class.

Heavy Equipment Changes - continued:

- Exhibit A, minor clarifications to the Excavator definition. This change will be seen in ALL solicitation templates since the Exhibit A is standard for ALL:
- EXCAVATOR, STEEP GROUND (STEEP GROUND EXCAVATOR) – Purpose built or modified construction excavator that is capable of working on slopes greater than 45 percent. These excavators may be Feller Buncher carriages with a bucket and hydraulic thumb or clamshell bucket replacing the saw, or tracked carriages equipped with a dozer type blade that may have had other modifications to allow the machine to work on steep grades. Operators are highly experienced in steep ground soil work and have knowledge, skills and abilities to construct firelines or rehabilitate firelines to near natural conditions.

Heavy Equipment Changes - continued:

- D.2.2.3, the following clause is added:
Biobased Products. This procurement requires the use of biobased products to the extent that such products are reasonably available, meet agency or relevant industry performance standards, and are reasonably priced. Where available, these products should first be acquired from among qualified products that fall under the umbrella of items designated through the Federal Biobased Products Preferred Procurement Program (FB4P). Information is available at:

<http://www.biopREFERRED.gov/>

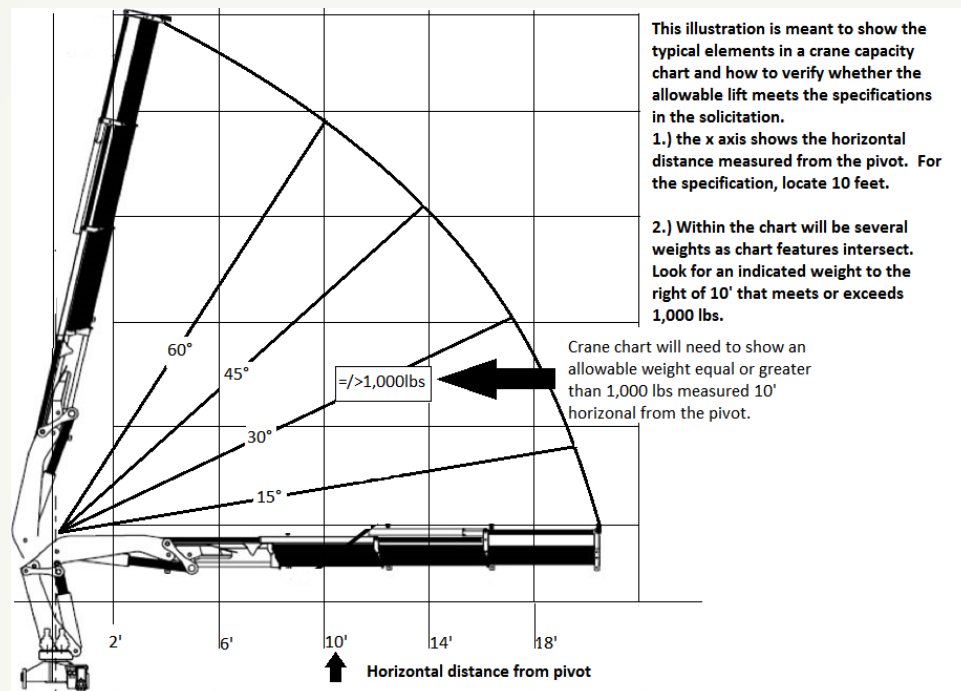


Mechanic with Service Truck



Mechanic with Service Truck Changes:

- Hydraulic Crane – establishing a performance specification for the crane.
 - Why the change? Some vendors were showing up with a crane that was either in a box and not affixed to the truck or “2-ton” was stenciled on the crane which lead to concerns on whether the crane would function as intended.





Fuel Tender

Fuel Tender - Typing



- ✓ The CETT is not recommending any changes.
- ✓ The solicitation is currently being reviewed to be included in the Incident Support Branch (ISB) program of work. If adopted by ISB, only one Contracting Officer for all regions would be assigned.
- ✓ ISB has requested the acquisition cycle be extended from 3 years to 5 years.
- ✓ FESSAA is reviewing the current NAICS code and considering changing to one that was recommended by the SBA; which is based on the number of employees instead of the total gross receipts (NAICS code 324110).

Fuel Tender Changes:

- D.2.2, the following clause is added:
Biobased Products. This procurement requires the use of biobased products to the extent that such products are reasonably available, meet agency or relevant industry performance standards, and are reasonably priced. Where available, these products should first be acquired from among qualified products that fall under the umbrella of items designated through the Federal Biobased Products Preferred Procurement Program (FB4P). Information is available at:



<http://www.biopREFERRED.gov/>

- D.6.1, the following clause is added:
(4) The government reserves the right to utilize other (unoperated or non-mobile) commercial facilities.



Vehicle with Driver

Vehicle with Driver – Changes

- ✓ The CETT is recommending the following language changes:
 - Pickup, Type 1 – established an upper range for GVWR to 19,500 lbs.
 - Pickup, Type 1 – established maximum bed length of 12'
 - Stakeside, Type 1 – established an upper range for GVWR to 26,000 lbs.



Summary of Useful Websites

- **Incident Procurement (external):**
<http://www.fs.fed.us/business/incident/>
- **VIPR Homepage (external):**
<http://www.fs.fed.us/business/incident/vipr.php>
- **Solicitation Templates:**
<http://www.fs.fed.us/business/incident/solicitations.php>
- **Agreement Link:**
<http://www.fs.fed.us/business/incident/agreementreports.php>
- **Inspection Checklists (See NOTES):**
<http://www.fs.fed.us/business/incident/equipment.php>
- **Dispatch Priority Lists:**
<http://www.fs.fed.us/business/incident/dispatch.php>
- **Interagency Incident Business Management Handbook:**
<http://www.nwccg.gov/publications>